

# Training and Resources

Members-only resources and webinars provide access to:

- Training on a range of topics
- Updates on hot-topics in planetary science
- Opportunities to engage with policy-makers and consultations
- A searchable database of industry relevant to planetary science.

# Proposal Support

Members can access:

- A platform to look for partners
- Information on funding opportunities
- Resources to support proposal-writing.



# Meeting Discounts

Members of the Europlanet Society enjoy discounted fees and exclusive activities at events, including the Europlanet Science Congress (EPSC) - the largest annual planetary science conference in Europe.



# Funding

Europlanet Society funding programmes include:

- Committee funding programmes to support local or special-interest projects
- The annual Public Engagement Funding Scheme
- Bursaries to attend events.

# Prizes

The Europlanet Society awards annual prizes, including the:

- Farinella Prize to recognise significant contributions in planetary science
- Europlanet Prize for Public Engagement
- EPSC Outstanding Student Poster Contest.

# Industry and Policy Activities

Europlanet engages with industry and policy-makers to:

- Foster collaborations and synergies, and stimulate innovation
- Contribute to evidence-based policy-making, and promote the socioeconomic impact of planetary science.

# Europlanet Early Career (EPEC) Network

EPEC is an active network organised by early-career researchers for early-career researchers. Working groups give an early career voice and perspective on policy, diversity, career support, outreach and more.

Activities include:

- Training and workshops at EPEC Annual Week and EPSC
- EPEC Slack: [epec-network.slack.com](https://epec-network.slack.com)
- Facebook: [epec.epn](https://www.facebook.com/epec.epn)
- Twitter: [epec\\_epn](https://twitter.com/epec_epn)
- Stairway to Space Podcast.



[bit.ly/EuroplanetEarlyCareers](https://bit.ly/EuroplanetEarlyCareers)



Join the Europlanet Society and access these membership benefits



# Individual Membership

## Standard

Researcher and Industry Professional

50€/Year (Regular) / 25€/Year (Under-represented States) \*

## Reduced

Early Career, Retired, Amateur and Outreach Provider/Educator

50€/Year (Regular) / 25€/Year (Under-represented States) \*

# Organisation Membership

## Premium

Includes 10 individual memberships

1000€/Year (Regular) / 500€/Year (Under-represented States) \*

## Standard

Includes 5 individual memberships

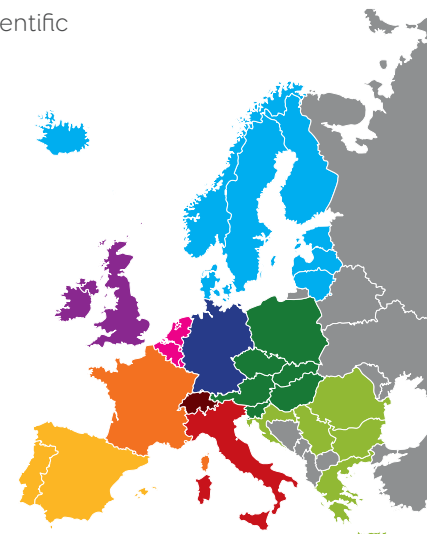
500€/Year (Regular) / 250€/Year (Under-represented States) \*

\* <https://bit.ly/EuroplanetURS>

# Regional Hubs

The Europlanet Society's 10 Regional Hubs organise networking events and workshops, and support the community in building links with the regional scientific communities, as well as amateur astronomers, industrial partners and policymakers.

- |                |                  |
|----------------|------------------|
| Benelux        | Italy            |
| Central Europe | Northern Europe  |
| France         | Southeast Europe |
| Germany        | Spain & Portugal |
| Ireland & UK   | Switzerland      |



# Diversity Committee

The Europlanet Diversity Committee acts as a strategic task force to advise, coordinate and champion activities that further the Europlanet Society's commitment to equality, diversity and inclusivity.

# Working Groups

Europlanet Society Working groups raise awareness of planetary sciences through outreach and educational activities, and engage with industry and policy-makers.



[www.europlanet-society.org](http://www.europlanet-society.org)  
[@europlanetmedia](https://twitter.com/europlanetmedia)

Contact:  
[contact@europlanet-society.org](mailto:contact@europlanet-society.org)  
[europlanet2024ri@kent.ac.uk](mailto:europlanet2024ri@kent.ac.uk)







**Europlanet 2024 RI's Transnational Access (TA) programme supports all travel and local accommodation costs for researchers to visit over 40 planetary analysis and simulation**

<https://bit.ly/europlanet2024ri-ta>

## Transnational Access

**facilities or field sites in Europe and around the world.**

**Access to Planetary Field Analogues** support studies of the targets of current and future missions, including Mars, the Moon and the icy moons of Jupiter.

**Access to Distributed Planetary Laboratory Facilities** enable the simulation or characterisation of planetary conditions and materials.

# eur PLANET 2024 Research Infrastructure

**The Europlanet 2024 Research Infrastructure (RI) provides free access to the world's largest collection of planetary simulation and analysis facilities, data services and tools, a ground-based observational network and a programme of community support activities.**

The project is funded through the European Commission's Horizon 2020 programme and runs from February 2020 until July 2024. The Europlanet 2024 RI consortium is led by the University of Kent, UK, and has over 50 beneficiary institutions from 24 countries in Europe and around the world, with a further 44 affiliated partners.

Please note: All Europlanet 2024 RI services are free and open to all. Membership of the Europlanet Society is not required.

<http://europlanet-2024-ri.eu>

### Want to know more?

The Europlanet Magazine is published twice a year and highlights news, opportunities and stories from the Europlanet community:

<https://bit.ly/EuroplanetMagazine>

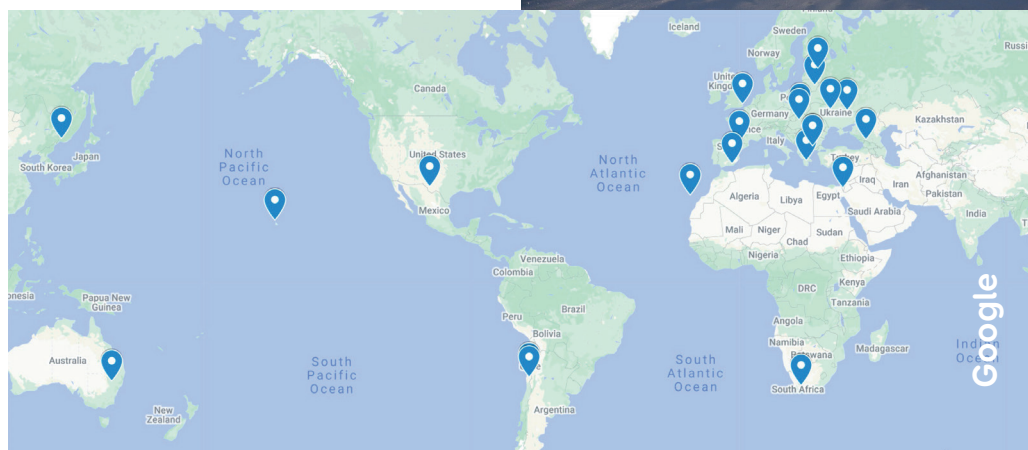
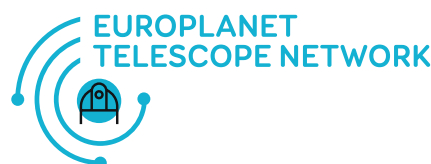


Europlanet 2024 RI has received funding from the European Union's Horizon 2020 research and innovation programme under grant agreement No 871149.

**Images:** Far Left: Planetary Field Analogue site at Rio Tinto, Spain, an extreme (highly-acidic) terrestrial environment that resembles Mars. Left: Inside the wind tunnel at Aarhus University. Below Top: The Calar Alto Astronomical Observatory, Spain. Below Bottom: Map of facilities in the Europlanet Telescope Network.

**The Europlanet Telescope Network is a network of small telescope facilities (diameters around 0.5-2 metres) to support planetary science observations by professional and amateur astronomers.** Europlanet 2024 RI supports physical and virtual visits to observe with the telescopes. The network coordinates long-term observational campaigns and time-critical observations of Solar System objects, as well as widening the participation of amateur astronomers in planetary science.

<https://bit.ly/EuroplanetTelescopeNetwork>



## Networking

Europlanet aims to develop an inclusive and culturally-diverse environment and a community that embraces cross-scientific and cross-cultural communication.

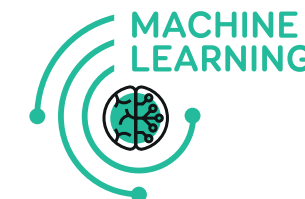
The Europlanet 2024 RI project organises a range of networking activities to support the planetary community, to widen participation from under-represented groups and to promote and industry-academia partnerships:

<http://bit.ly/epr2024ri-networking>



VESPA is a Virtual Observatory for planetary data that connects over 50 datasets, enables rapid data searches and provides tools to retrieve, compare and display data and results of scientific analyses.

[www.europlanet-vespa.eu](http://www.europlanet-vespa.eu)



Europlanet's Machine Learning activity deploys artificial intelligence to extract knowledge from the vast treasure-trove of data from planetary missions, simulations and laboratory experiments.

<http://ml-portal.oaew.ac.at/>

## Virtual Access

Europlanet 2024 RI provides a suite of virtual access services.



SPIDER provides services to model planetary environments and solar wind interactions through a dedicated run-on-request infrastructure and associated databases.

[spider-europlanet.irap.omp.eu](http://spider-europlanet.irap.omp.eu)



GMAP is building a European infrastructure for geological mapping of any Solar System body, to support robotic and human exploration.

[www.europlanet-gmap.eu](http://www.europlanet-gmap.eu)

**The Europlanet Mentorship Programme** helps early career professionals to develop expertise, ask questions and discuss career plans with more established members of the planetary community.

**The Early Careers Training and Education Portal** provides information on PhD positions, job opportunities, summer schools and meetings.

**The Expert Exchange Programme** mobilises the community by funding visits of up to a week to share expertise and to support the expansion of Europlanet's research infrastructure.

**Policy activities** support evidence-based policy-making in areas related to planetary science.

**Industry activities** foster collaborations between industry and the planetary community.

**Media, Outreach and Education Programmes** promote the activities of Europlanet and engage wider society, particularly the next generation, with planetary science.

**Workshops** provide training and opportunities to build new collaborations.